

PAWS Studio  
Release Notes

Version 1.43.1 March 21, 2019

# Table of contents

<b>1</b>	<b>Paws Developer's Studio</b>	<b>4</b>
<b>1.1</b>	<b>Critical Items</b>	<b>4</b>
1.1.1	No Critical Items Addressed in This Release	4
<b>1.2</b>	<b>Known Limitations</b>	<b>4</b>
1.2.1	No Known Limitations Addressed in This Release	4
<b>1.3</b>	<b>Enhancements</b>	<b>4</b>
1.3.1	No Enhancements Addressed in This Release	4
<b>1.4</b>	<b>Problem Reports</b>	<b>4</b>
1.4.1	Font Change Options Are Expanded (TaskID 1910)	4
<b>2</b>	<b>Run Time System</b>	<b>5</b>
<b>2.1</b>	<b>Critical Items</b>	<b>5</b>
2.1.1	No Critical Items Addressed in This Release	5
<b>2.2</b>	<b>Known Limitations</b>	<b>5</b>
2.2.1	No Known Limitations Addressed in This Release	5
<b>2.3</b>	<b>Enhancements</b>	<b>5</b>
2.3.1	No Enhancements Addressed in This Release	5
<b>2.4</b>	<b>Problem Reports</b>	<b>5</b>
2.4.1	Customize RTS Toolbar And Menu Font (TaskID 1910)	5
2.4.2	Customize System Menus for Main Frame, Station Display and Measurement Window (TaskID 1910)	6
2.4.3	Customize Dialog Bar System Menus and Toolbars (TaskID 1910)	7
2.4.4	Customize INPUT Resource in IO Subsystem (TaskID 1910)	8
2.4.5	Font Change Options Are Expanded (TaskID 1910)	10
<b>3</b>	<b>Paws Compilers All Subsets</b>	<b>11</b>
<b>3.1</b>	<b>Critical Items</b>	<b>11</b>
3.1.1	No Critical Items Addressed in This Release	11
<b>3.2</b>	<b>Known Limitations</b>	<b>11</b>
3.2.1	No Known Limitations Addressed in This Release	11
<b>3.3</b>	<b>Enhancements</b>	<b>11</b>
3.3.1	No Enhancements Addressed in This Release	11
<b>3.4</b>	<b>Problem Reports</b>	<b>11</b>
3.4.1	No Problem Reports Addressed in This Release	11
<b>4</b>	<b>Paws Compilers CASS Subset</b>	<b>12</b>
<b>4.1</b>	<b>Critical Items</b>	<b>12</b>
4.1.1	No Critical Items Addressed in This Release	12
<b>4.2</b>	<b>Known Limitations</b>	<b>12</b>
4.2.1	No Known Limitations Addressed in This Release	12
<b>4.3</b>	<b>Enhancements</b>	<b>12</b>
4.3.1	No Enhancements Addressed in This Release	12

<b>4.4</b>	<b>Problem Reports</b>	<b>12</b>
4.4.1	No Problem Reports Addressed in This Release	12

## 1 Paws Developer's Studio



Version 1.43.1

Release date: March 21, 2019

### 1.1 Critical Items

#### 1.1.1 No Critical Items Addressed in This Release

No critical items addressed in this release.

### 1.2 Known Limitations

#### 1.2.1 No Known Limitations Addressed in This Release

No known limitations.

### 1.3 Enhancements

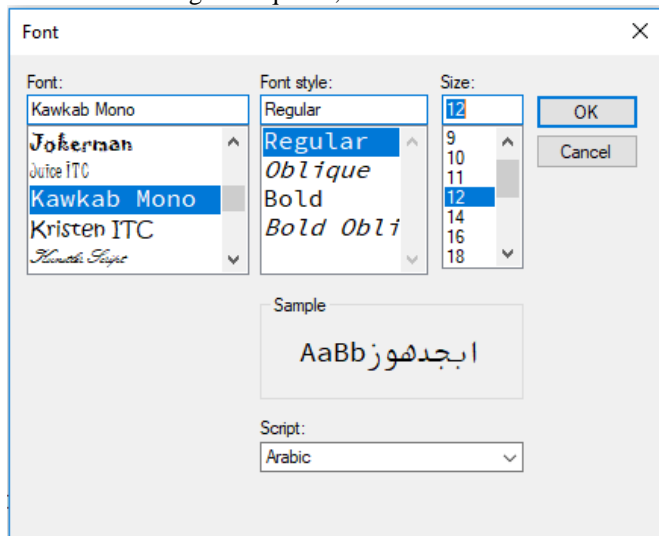
#### 1.3.1 No Enhancements Addressed in This Release

No enhancements.

### 1.4 Problem Reports

#### 1.4.1 Font Change Options Are Expanded (TaskID 1910)

When Font Change is required, the list of available fonts is not anymore limited to fixed pitch fonts:



## 2 Run Time System



**Version 1.43.1**

**Release date: March 21, 2019**

### 2.1 Critical Items

#### 2.1.1 No Critical Items Addressed in This Release

No critical items addressed in this release.

### 2.2 Known Limitations

#### 2.2.1 No Known Limitations Addressed in This Release

No known limitations.

### 2.3 Enhancements

#### 2.3.1 No Enhancements Addressed in This Release

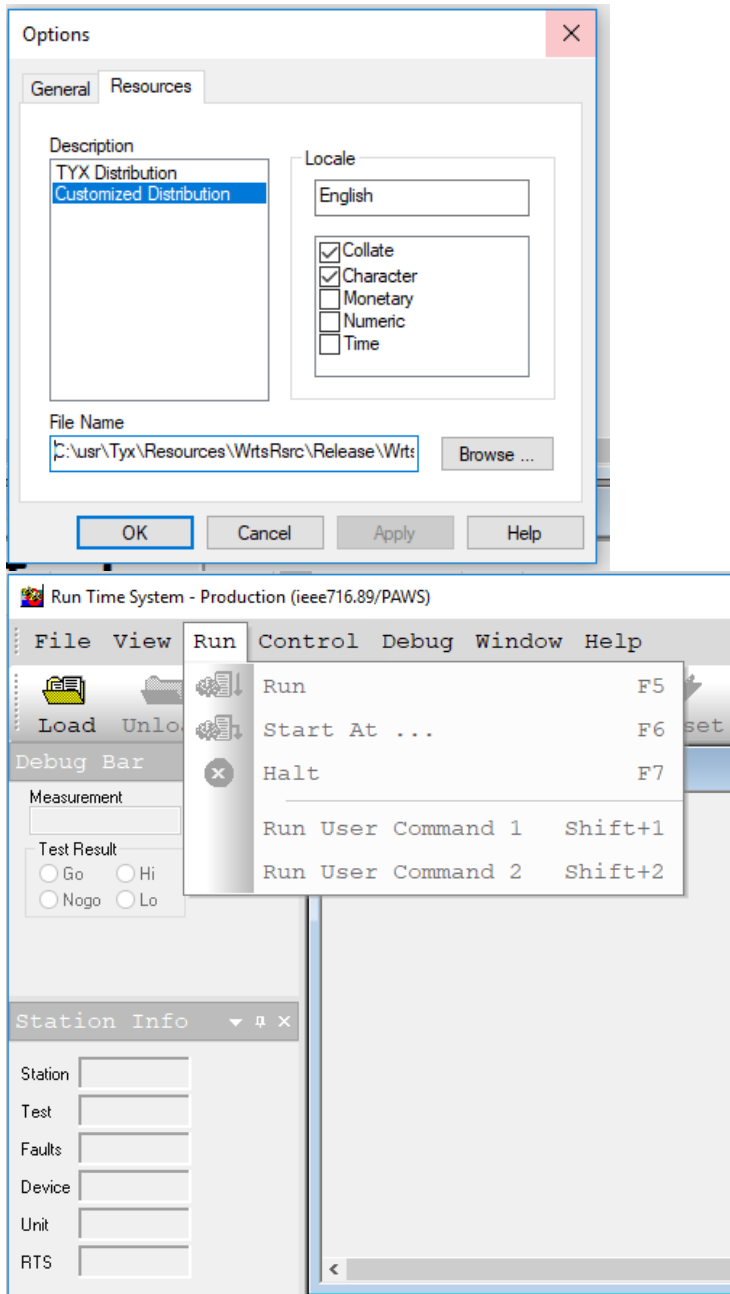
No enhancements were addressed in this release.

### 2.4 Problem Reports

#### 2.4.1 Customize RTS Toolbar And Menu Font (TaskID 1910)

When RTS runs on Windows 7 and 10, the default font for its menus and toolbars is Segoe UI, size 9. Menus and toolbars fonts can be changed by building and loading a customized resource:

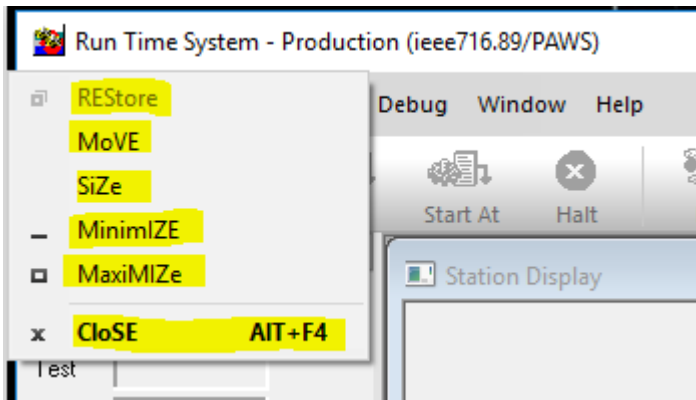
```
WrtsRsrc - Microsoft Visual Studio
File Edit View Project Build Debug Team Tools Test Analyze Window Help
Release Win32 Local Windows Debugger
Mfc_Rts.rc
C:\usr\Typ\Resources\WrtsRsrc\Mfc_Rts.rc
695 STRINGTABLE
696 BEGIN
697     IDS_MAINFRAME_FONT_CUSTOMIZABLE "true"
698     IDS_MAINFRAME_FONT_TYPEFACE    "Courier New"
699     IDS_MAINFRAME_FONT_POINTSIZE   "12"
700     IDS_MAINFRAME_FONT_CHARSET     "0" // use 178 for ARABIC_CHARSET:
```



#### 2.4.2 Customize System Menus for Main Frame, Station Display and Measurement Window (TaskID 1910)

These are the resource identifier in C:\usr\Tyx\Resources\WrtsRsrc\WrtsRsrc.sln Visual Studio 2017 solution that controls the text in the pictures:

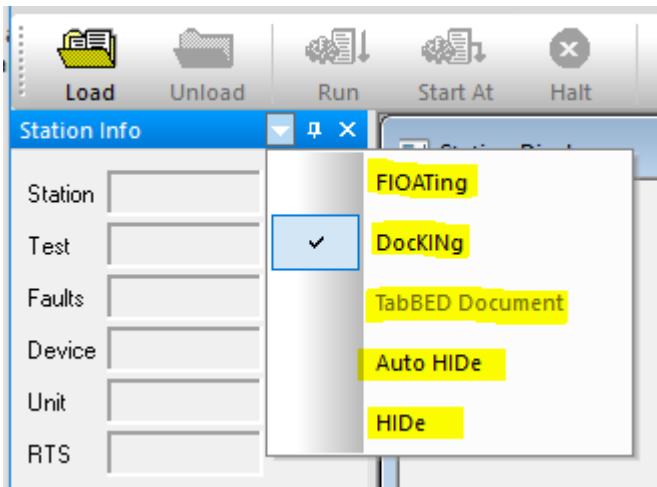
- IDS\_MAINFRAME\_SYSMENU\_CUSTOMIZABLE through IDS\_MAINFRAME\_SYSMENU\_CLOSE:



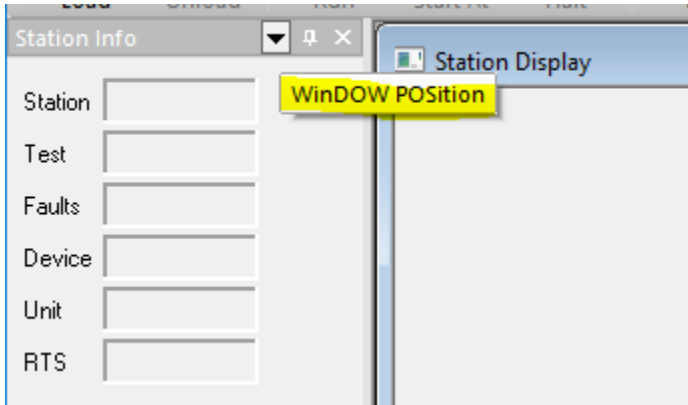
### 2.4.3 Customize Dialog Bar System Menus and Toolbars (TaskID 1910)

These are the resource identifier in C:\usr\Tyx\Resources\WrtsRsrc\WrtsRsrc.sln Visual Studio 2017 solution that controls the text in the pictures:

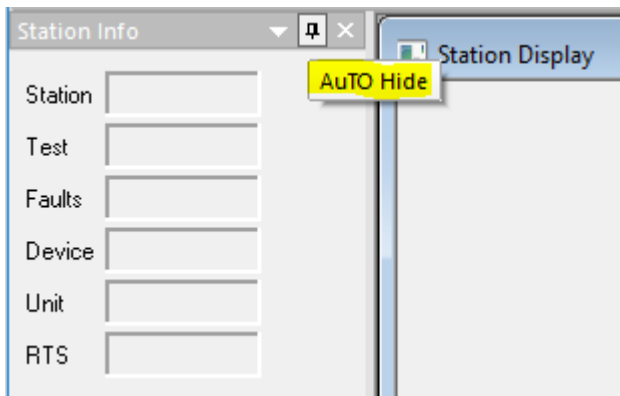
- IDS\_AFXBARRES\_FLOATING, IDS\_AFXBARRES\_DOCKING, IDS\_AFXBARRES\_TABBED, IDS\_AFXBARRES\_AUTOHIDE, IDS\_AFXBARRES\_HIDE:



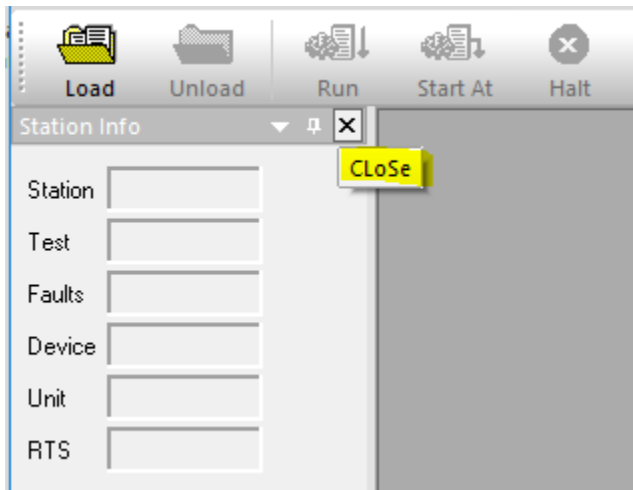
- IDS\_AFXBARRES\_MENU:



- IDS\_AFXBARRES\_AUTOHIDEBAR:



- IDS\_AFXBARRES\_CLOSEBAR:



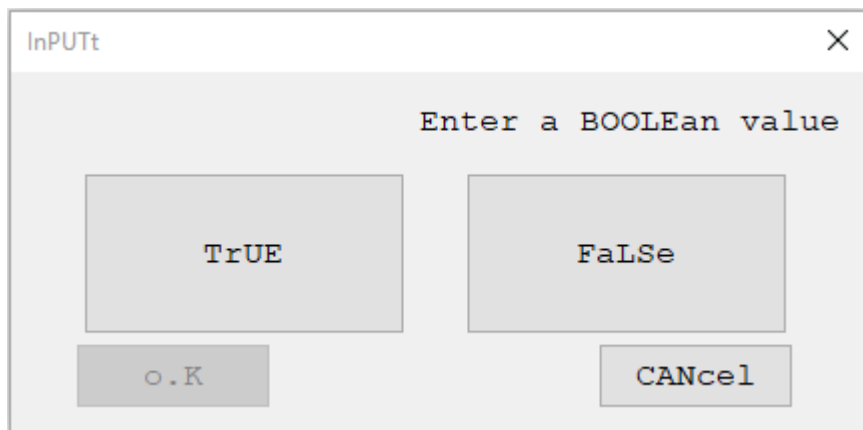
#### 2.4.4 Customize INPUT Resource in IO Subsystem (TaskID 1910)

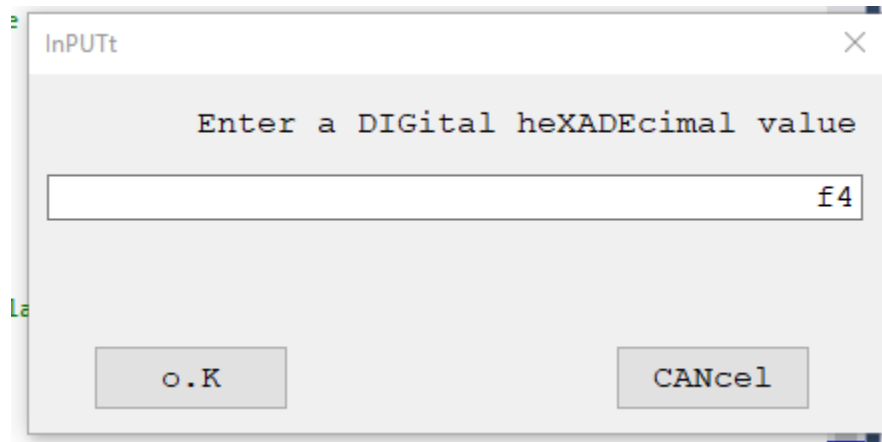
The strings resources dedicated to customize the INPUT resource were extended.



```
WrtsRsrc - Microsoft Visual Studio
File Edit View Project Build Debug Team Tools Test Analyze Window Help
Release Win32 Local Windows Debugger
Mfc_Rts.rc
C:\usr\Tyx\Resources\WrtsRsrc\Mfc_Rts.rc
676 STRINGSBEGIN
677 BEGIN
678     IDS_INPUT_MULTILANGUAGE_CUSTOMIZABLE "true" // set this value to "true" to enable INPI
679
680     IDS_INPUT_MULTILANGUAGE_BOOLEAN_VALUE_PROMPT "Enter a BOOLEAn value"
681     IDS_INPUT_MULTILANGUAGE_INT_VALUE_PROMPT "Enter an INTEger value"
682     IDS_INPUT_MULTILANGUAGE_REAL_VALUE_PROMPT "Enter a REAL value"
683     IDS_INPUT_MULTILANGUAGE_TEXT_VALUE_PROMPT "Enter a TEXT value"
684     IDS_INPUT_MULTILANGUAGE_CNX_VALUE_PROMPT "Enter a CONNecTion value"
685     IDS_INPUT_MULTILANGUAGE_DIGITAL_VALUE_PROMPT "Enter a DIGital %s value" // one of the
686     IDS_INPUT_MULTILANGUAGE_BINARY_VALUE_PROMPT "bINArY"
687     IDS_INPUT_MULTILANGUAGE_OCTAL_VALUE_PROMPT "oCTAL"
688     IDS_INPUT_MULTILANGUAGE_HEXADEcIMAL_VALUE_PROMPT "heXADEcimal"
689     IDS_INPUT_MULTILANGUAGE_OK_BUTTON_TEXT "o.K"
690     IDS_INPUT_MULTILANGUAGE_CANCEL_BUTTON_TEXT "CANcel"
691     IDS_INPUT_MULTILANGUAGE_USEHISTORY_BUTTON_TEXT "&USE HIStory"
692     IDS_INPUT_MULTILANGUAGE_TRUE_BUTTON_TEXT "&TrUE"
693     IDS_INPUT_MULTILANGUAGE_FALSE_BUTTON_TEXT "&FaLSe"
694     IDS_INPUT_MULTILANGUAGE_INPUT_DIALOG_TITLE "InPUTt"
695
696     IDS_INPUT_MULTILANGUAGE_TEXT_ALIGNMENT "right" // this can be either "left", "center".
697     IDS_INPUT_MULTILANGUAGE_FONT_TYPEFACE "Courier New"
698     IDS_INPUT_MULTILANGUAGE_FONT_POINTSIZE "12"
699     IDS_INPUT_MULTILANGUAGE_FONT_CHARSET "178"
700     IDS_INPUT_MULTILANGUAGE_USEHISTORY_AVAILABLE "false" // do not translate this value
701 END
```

The text alignment string resource is applied to both Boolean and Text INPUT dialogs:

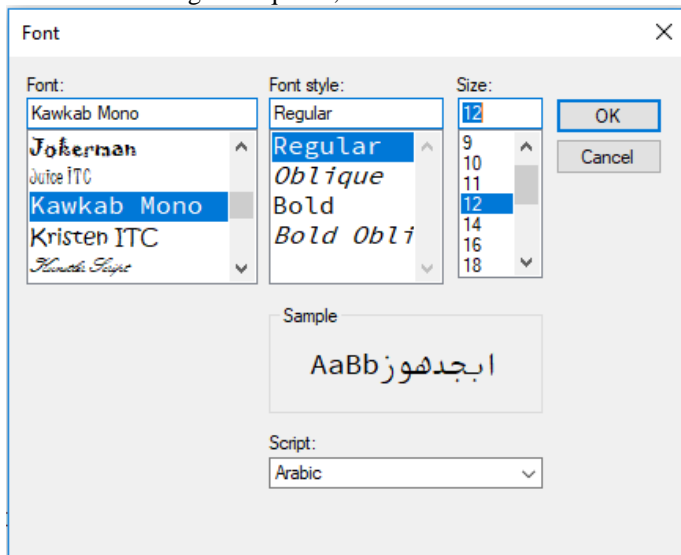




The Use Hystory buttons are hidden due to the `IDS_INPUT_MULTILANGUAGE_USEHISTORY_AVAILABLE` value, for both INPUT dialogs.

#### 2.4.5 Font Change Options Are Expanded (TaskID 1910)

When Font Change is required, the list of available fonts is not anymore limited to fixed pitch fonts:



### **3 Paws Compilers All Subsets**



**Version 1.43.1**

**Release date: March 21, 2019**

#### **3.1 Critical Items**

##### **3.1.1 No Critical Items Addressed in This Release**

No critical items

#### **3.2 Known Limitations**

##### **3.2.1 No Known Limitations Addressed in This Release**

No known limitations

#### **3.3 Enhancements**

##### **3.3.1 No Enhancements Addressed in This Release**

No enhancements

#### **3.4 Problem Reports**

##### **3.4.1 No Problem Reports Addressed in This Release**

No problem reports

## 4 Paws Compilers CASS Subset



Version 1.43.1

Release date: March 21, 2019

### 4.1 Critical Items

#### 4.1.1 No Critical Items Addressed in This Release

No critical items

### 4.2 Known Limitations

#### 4.2.1 No Known Limitations Addressed in This Release

No known limitations

### 4.3 Enhancements

#### 4.3.1 No Enhancements Addressed in This Release

No enhancements

### 4.4 Problem Reports

#### 4.4.1 No Problem Reports Addressed in This Release

No problem reports