

Release Notes
TYX TRD
Version 2.1.0
December 6, 2002

1. Overview

This is a maintenance release, including minor fixes and enhancements.

2. Detailed Description

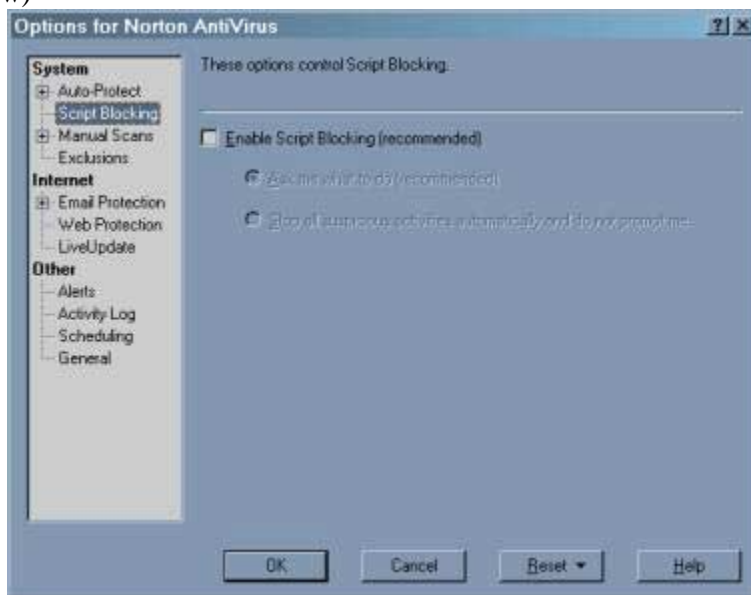
2.1. Critical items

2.1.1. Interaction with anti-virus software

Some anti-virus programs automatically scan downloaded HTML pages, blocking the executions of scripts that are considered potentially dangerous. Because the TRD Editor is an HTML application and some of its pages interact with files in the local file system, these anti-virus programs may block the execution of scripts, thus compromising the operation of the TRD Editor. To avoid this behavior, you should configure your anti-virus software, disabling script blocking.

In Norton SystemWorks the above configuration may be performed as follows:

- open Norton SystemWorks
- go to **Options | Norton AntiVirus**
- select “Script blocking” in the tree area and uncheck “Enable Script Blocking” (see screen capture below)



Note: In some cases Norton AntiVirus keeps interfering with the TRD Editor, even if “Script blocking” was disabled. It appears that a configuration or a LiveUpdate operation re-enables the “Script blocking” option. If during the operation of the TRD Editor you receive a warning regarding a script, select the option “allow this activity once”. Afterwards, check the “Script blocking” option, as indicated before.

2.1.2. Operating system compatibility

The product works properly with Windows NT 4.0 SP 6, Windows 2000 SP 2 and Windows XP.

2.1.3. Internet Explorer compatibility

The product works properly with Microsoft Internet Explorer 5.5 and 6.0. It does not work with Internet Explorer 5.0.

2.1.4. Microsoft Office compatibility

The generation of Word documents and the display of Excel reports works properly with Microsoft Office 2000 Service Release 1 and Microsoft Office XP.

2.1.5. Microsoft Visio compatibility

The generation of flowcharts works properly with Microsoft Visio 2000. The current version of the product is not compatible with Visio 2002.

2.2. Known Limitations

2.2.1. Functionality

The following categories of functionality, available in TRD 1.x versions, are not implemented in this release:

- ATLAS-to-TRD conversion

The following categories of functionality are partially implemented in the release:

- TRD formats
 - MIL-STD-1519 is the only format supported directly in the distribution; however, support for additional standardized or custom formats may be added by users

DiagML Import not supported in this release, due to changes in DiagML specification.

2.3 Enhancements

The enhancements indicated below were implemented since the 2.0.1 Release.

2.3.1. Specification of release levels for individual sheets

Users are now able to specify release levels for the entire document (in the “PROJECT PROPERTIES” page), as well as for individual sheets. To specify the revision level for a sheet, enter up to four characters in the “REV.” field.

During the automatic generation of revision information, new Revision Sheet entries are generated only for pages whose current revision levels are different from the last levels recorded in Revision Sheets.

2.3.2. Specification of Start Test Number in automatic test range renumbering

Users are now able to specify the number to be assigned to the first test in the renumbering range. To specify the Start Test Number, enter it in the Start field of the “Renumber tests” dialog.

The following numbers will be assigned to the tests: <Start>, <Start> + <Increment>, <Start> + 2*<Increment>, etc. If a number to be assigned is already used for an existing test, an error message is generated and the renumbering operation is canceled. In this situation, use different Start and Increment values to avoid test number overlaps.

2.3.3. Increased field widths

The width of the following fields was increased in TRD Editor sheets:

- page Design2Sheet, all fields in DC SOURCES table: from 6 to 9 characters
- page Interface2Sheet, all fields in PIN column: from 3 to 6 characters

The widths for Interface2Sheet exceed the display capabilities of the corresponding table cells in the TRD document template (TrdReport.dot). To avoid data loss, the template included in this version contains an algorithm that reduces automatically the size of the font.

Note: Users who have customized versions of the TrdReport.dot file may include a similar algorithm, using as a model the code found in the file provided with the current distribution, in function FillTable_Ifdef2, between lines 3773 and 3779. This code is also included below:

```
' on second column (PIN) change font size if
' the field contains more than 3 characters
If Len(Val) > 3 Then
    If (iCount = 2) Then
        .Cell(iIndex + 8, iCount).Range.Font.Size = 5
    End If
End If
```

2.4 Problem Reports

2.4.1. Incomplete vertical scroll in TRD Editor

For certain window sizes, the vertical scrolling of TRD sheets does not work properly. When the Tab key is used for scrolling, the cursor disappears below the lower edge of the window.

This problem was fixed for all commonly used window sizes.