

TYX CORPORATION

---

Productivity Enhancement Systems



# PAWS Studio Release Notes

# Version 1.39.7

## January 26, 2012

### Table of contents

<b>1</b>	<b>Paws Developer's Studio</b>	<b>3</b>
1.1	Critical Items	3
1.2	Known Limitations	3
1.3	Enhancements	3
1.3.1	PawFileGenerator Application	3
1.3.2	1641 Carrier Language Translator into ATLAS changed its architecture	3
1.4	Problem Reports	4
<b>2</b>	<b>Run Time System</b>	<b>5</b>
2.1	Critical Items	5
2.2	Known Limitations	5
2.3	Enhancements	5
2.3.1	TextPublisher IO Resources Filters Out Bus Error Messages	5
2.4	Problem Reports	6

# 1 Paws Developer's Studio



Version 1.39.7

Release date: January 26, 2012

## 1.1 Critical Items

## 1.2 Known Limitations

## 1.3 Enhancements

### 1.3.1 PawFileGenerator Application

Based on an XML file defined in `c:\usr\tyx\bin\PawXml.xsd`, `c:\usr\tyx\bin\PawFileGenerator.exe` creates a PAW file that later can be loaded and used by Paws Developer's Studio, as if this project file had been generated on Studio's `File | New Project` creation path.

A sample of the input XML file is present in `c:\usr\tyx\bin\PawFileDescription.xml`.

### 1.3.2 1641 Carrier Language Translator into ATLAS changed its architecture

Unlike the previous translator, this one implements a two-pass approach on the input file. In the first pass, the translator acquires all the XML signal definitions in the TPL sections. In the second pass, these signal definitions are available, allowing the translator to encode signal oriented TPL instructions in segments of code that precede the actual place where the signals were defined.

This feature is extremely handy when the user defined a test sequence that turned on a source through cold switching. This assumes that the connecting relays are closed first, then the source is turned on:

```
class A
{
    public void main()
    {
        <TPL>
        Connect s;
        Setup
        <Signal Out="tw">
        <Constant name="c" amplitude="5 V"/>
        <TwoWire name="tw" In="c" hi="J1" lo="J2" channelWidth="1"/>
        </Signal>
        as s;
        </TPL>
    }
}
```

In the example above, the encoding of the Connect statement can only be done if the content of the XML signal defined by `s` is known.

## 1.4 Problem Reports

## 2 Run Time System



**Version 1.39.7**

**Release date: January 26, 2012**

### 2.1 Critical Items

### 2.2 Known Limitations

### 2.3 Enhancements

#### 2.3.1 TextPublisher IO Resources Filters Out Bus Error Messages

In the case of the CIIL-MATE instruments, or the instruments that have macro code as drivers, the RTS is able to filter out the TextPublisher messages that contain the "Bus error" string. RTS is configured to use the TextPublisher IO resources for its OUTPUT, WARNING, ERROR, INFO, and DISPLAY channels.

As a result of having this feature turned on, a warning containing the "Bus error" string is masked:

With the feature turned off (this is the default configuration):

```
Binary files "Rtdg", version 20110922
Date stamp: Tue Dec 13 10:23:59 2011
Built In LEX Information
CEM Module User / Kernel Model 2 Version 1.39.6
Message from INITIALIZE (macro)
Before
WARNING: (vlc=011160) BIF 43 - Bus error
After
```

With the feature turned on:

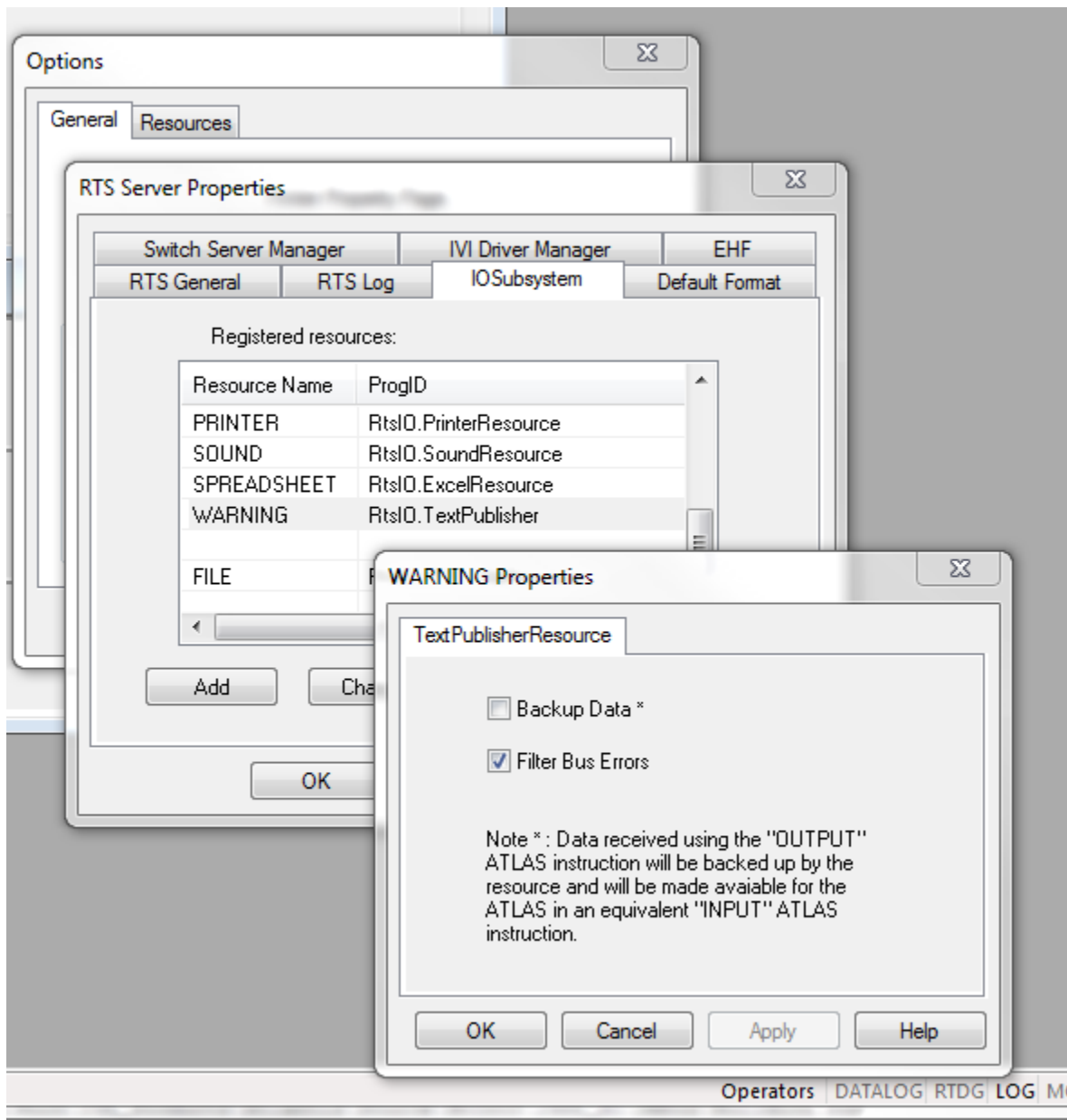
```
Binary files "Rtdg", version 20110922
Date stamp: Tue Dec 13 10:23:59 2011
Built In LEX Information
CEM Module User / Kernel Model 2 Version 1.39.6
Message from INITIALIZE (macro)
Before
After
```

By default, this feature is turned off. When this message is turned on, it only filters out the messages that contain the "Bus error" string, continuing to display all the others.

In order to turn this feature on and get the results described above on the WARNING channel, the following steps have to be followed:

- Launch `c:\usr\tyx\bin\wrts.exe`. Do not load any project.
- Go to: Control | Options | RTS Property Pages. Choose the IOSubsystem tab.

- Select the WARNING resource name, then click Properties.
- Check the Filter Bus Errors checkbox:



- Close with OK all open dialogs. Close the RTS.

## 2.4 Problem Reports